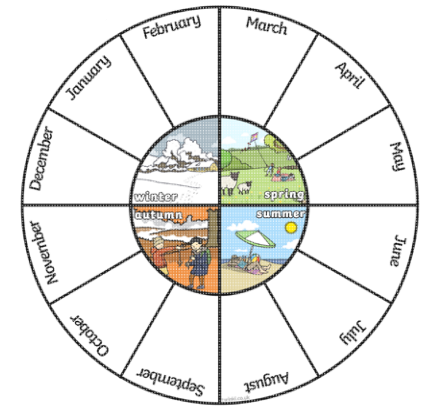
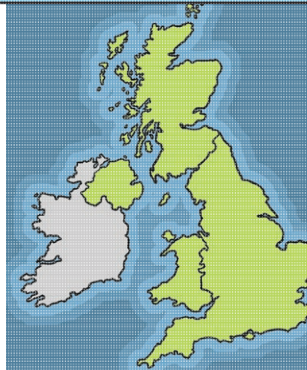


Key Vocabulary

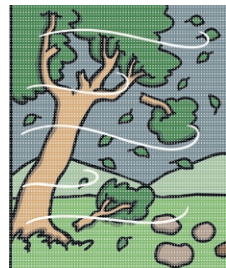
<b>seasons</b>	The year is divided into four <b>seasons</b> : spring, summer, autumn and winter.
<b>observations</b>	What you notice when you look carefully at something.
<b>record</b>	Keep information about something that has happened, e.g. in writing or pictures.
<b>temperature</b>	A measure of how hot or cold something is.
<b>thermometer</b>	An instrument used to measure <b>temperature</b> .
<b>United Kingdom</b>	Made up of England, Northern Ireland, Scotland and Wales. Sometimes known as the UK.
<b>affects</b>	Makes a difference to.
<b>waterproof</b>	Keeps out water.

Our Weather

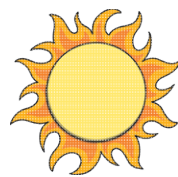
The weather in the **United Kingdom** can change from day to day. The four **seasons** have particular weather patterns. You could keep a weather diary by measuring the **temperature** (using a **thermometer**) and **recording** your **observations**.



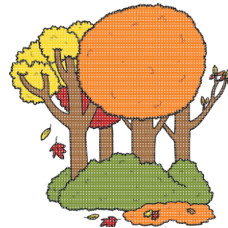
Seasonal Changes



There are changes in weather in each **season**. In spring, it is often rainy and the **temperature** begins to get warmer.



In summer, the sun is much stronger. The **temperature** is warmer than in any other **season**.



In the autumn, the weather turns chillier, windier and there is often rain.

In the winter, it is often cold and frosty. It has to be freezing cold to snow.

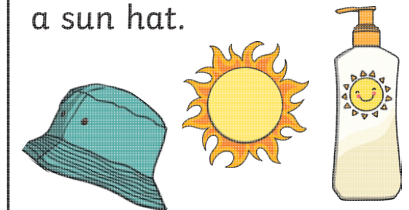


How the Weather Affects Us

The weather **affects** what we do and what we wear. If it is rainy, we wear **waterproof** clothes when we go outside.



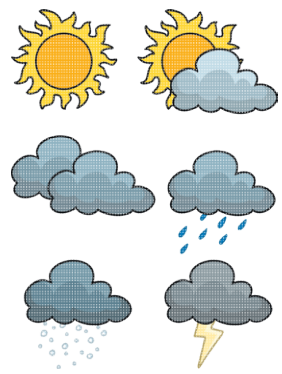
If it is hot, we need to wear sun cream and a sun hat.



Key Vocabulary	
<b>weather forecast</b>	A prediction of what the weather will be like in the future.
<b>symbols</b>	Pictures or signs that help us understand something.
<b>extreme</b>	Beyond what is normal.
<b>drought</b>	When there is no rainfall for a long time.
<b>flooding</b>	When usually dry land is covered with a large amount of water.
<b>blizzard</b>	A very heavy snowstorm with high winds.
<b>heatwave</b>	Unusually hot weather over a long period.
<b>hurricane</b>	A storm with extremely strong winds.
<b>climate</b>	The usual weather conditions of an area.

### Our Weather

In a weather forecast, **symbols** are used to show what the weather will be like in a particular area. People check the weather forecast before they make plans for a day out. Computers are used to help make accurate weather forecasts.



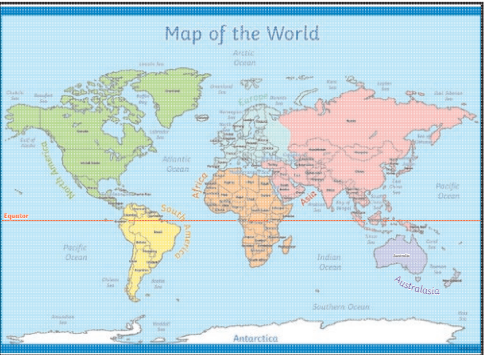
### Weather around the World

In some places around the world, the weather can be **extreme** and this can be dangerous.



### Weather Dangers

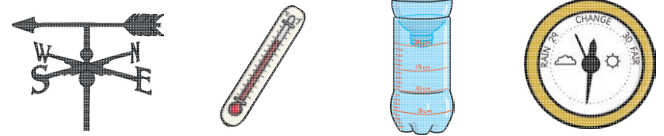
People need to take special care in **extreme** weather such as: **droughts**, **flooding**, **blizzards**, **heatwaves** and **hurricanes**. **Extreme** weather can **affect** our surroundings as well as us.



### Climates

Countries around the world have different **climates**. Countries near the equator have hotter **climates** and the Arctic and Antarctic have much colder **climates**. **Climates** can **affect** many things, such as which plants can grow. Many animals are specially adapted to the climate they live in.

Different instruments can be used to measure and **record** the weather.



weather vane   thermometer   rain gauge   barometer